



Noise Monitoring Result

Day Time (0700 - 1900hrs on normal weekdays)

Location: M1a - Footbridge at EX-Wanchai Harbour Road Sports Centre

Date	Time	Weather	Measurement Noise Level			Baseline Level	Construction Noise Level	Limit Level
			Leq	L10	L90	Leq	Leq	Leq
Unit: dB(A), (30-min)								
5/3/19	17:18	Fine	72.7	74.9	68.3	72	63	75
11/3/19	10:45	Fine	74.7	76.0	68.0	72	71	75
22/3/19	13:50	Cloudy	71.5	73.5	68.5	72	72	75
25/3/19	09:35	Cloudy	74.1	77.0	69.5	72	70	75



Noise Monitoring Result

Day Time (0700 - 1900hrs on normal weekdays)

Location: M2b - Noon-day gun area

Date	Time	Weather	Measurement Noise Level			Baseline Level	Construction Noise Level	Limit Level
			Leq	L10	L90	Leq	Leq	Leq
Unit: dB(A), (30-min)								
8/3/19	13:00	Fine	63.6	66.1	59.8	68	64	75
11/3/19	11:25	Fine	66.2	68.5	63.5	68	66	75
22/3/19	11:09	Cloudy	65.5	67.2	62.8	68	66	75
25/3/19	13:00	Fine	68.5	70.0	64.5	68	61	75

Location: M3a - Tung Lo Wan Fire Station

Date	Time	Weather	Measurement Noise Level			Baseline Level	Construction Noise Level	Limit Level
			Leq	L10	L90	Leq	Leq	Leq
Unit: dB(A), (30-min)								
5/3/19	13:46	Fine	66.5	69.7	62.5	69	67	75
12/3/19	09:25	Fine	68.4	69.5	66.5	69	68	75
18/3/19	09:50	Fine	65.6	67.0	63.0	69	66	75
28/3/19	09:00	Fine	64.7	67.5	59.4	69	65	75



Noise Monitoring Result

Day Time (0700 - 1900hrs on normal weekdays)

Location: M4b - Victoria Centre

Date	Time	Weather	Measurement Noise Level			Baseline Noise Level	Construction Noise Level	Limit Level
			Leq	L10	L90	Leq	Leq	Leq
Unit: dB(A), (30min)								
5/3/19	13:10	Fine	67.5	69.5	64.0	67	54	75
12/3/19	08:30	Fine	68.6	70.5	65.0	67	63	75
18/3/19	09:00	Fine	72.3	75.7	63.5	67	71	75
28/3/19	08:20	Fine	66.8	67.5	62.5	67	67	75

Location: M5b - City Garden

Date	Time	Weather	Measurement Noise Level			Baseline Level	Construction Noise Level	Limit Level
			Leq	L10	L90	Leq	Leq	Leq
Unit: dB(A), (30min)								
5/3/19	14:32	Fine	68.6	70.0	66.5	68	60	75
12/3/19	10:30	Fine	70.1	72.5	66.3	68	66	75
18/3/19	10:50	Fine	71.2	74.5	67.0	68	68	75
28/3/19	09:45	Fine	69.3	70.5	67.5	68	63	75

Location: M6 - HK Baptist Church Henrietta Secondary School

Date	Time	Weather	Measurement Noise Level			Baseline Level	Construction Noise Level	Limit Level
			Leq	L10	L90	Leq	Leq	Leq
Unit: dB(A), (30-min)								
5/3/19	15:05	Fine	67.8	69.0	65.5	71	68	70
12/3/19	11:10	Fine	67.8	68.5	65.7	71	68	70
18/3/19	11:28	Fine	68.6	69.5	67.0	71	69	70
28/3/19	10:25	Fine	68.9	70.0	67.5	71	69	70



Noise Monitoring Result

Day Time (0700 - 1900hrs on normal weekdays)

Location: M7e - International Finance Centre (Eastern End of Podium) (Reference Station)

Date	Time	Weather	Measurement Noise Level			Baseline Level	Construction Noise Level	Limit Level
			Leq	L10	L90	Leq	Leq	Leq
Unit: dB(A), (30-min)								
4/3/19	10:50	Fine	67.7	69.5	65.0	67	60	N/A
11/3/19	13:25	Fine	67.1	68.5	64.0	67	55	N/A
18/3/19	13:45	Fine	66.9	68.5	64.0	67	50	N/A
25/3/19	14:16	Fine	67.3	68.5	64.5	67	58	N/A

Location: M7w - International Finance Centre (Western End of Podium)

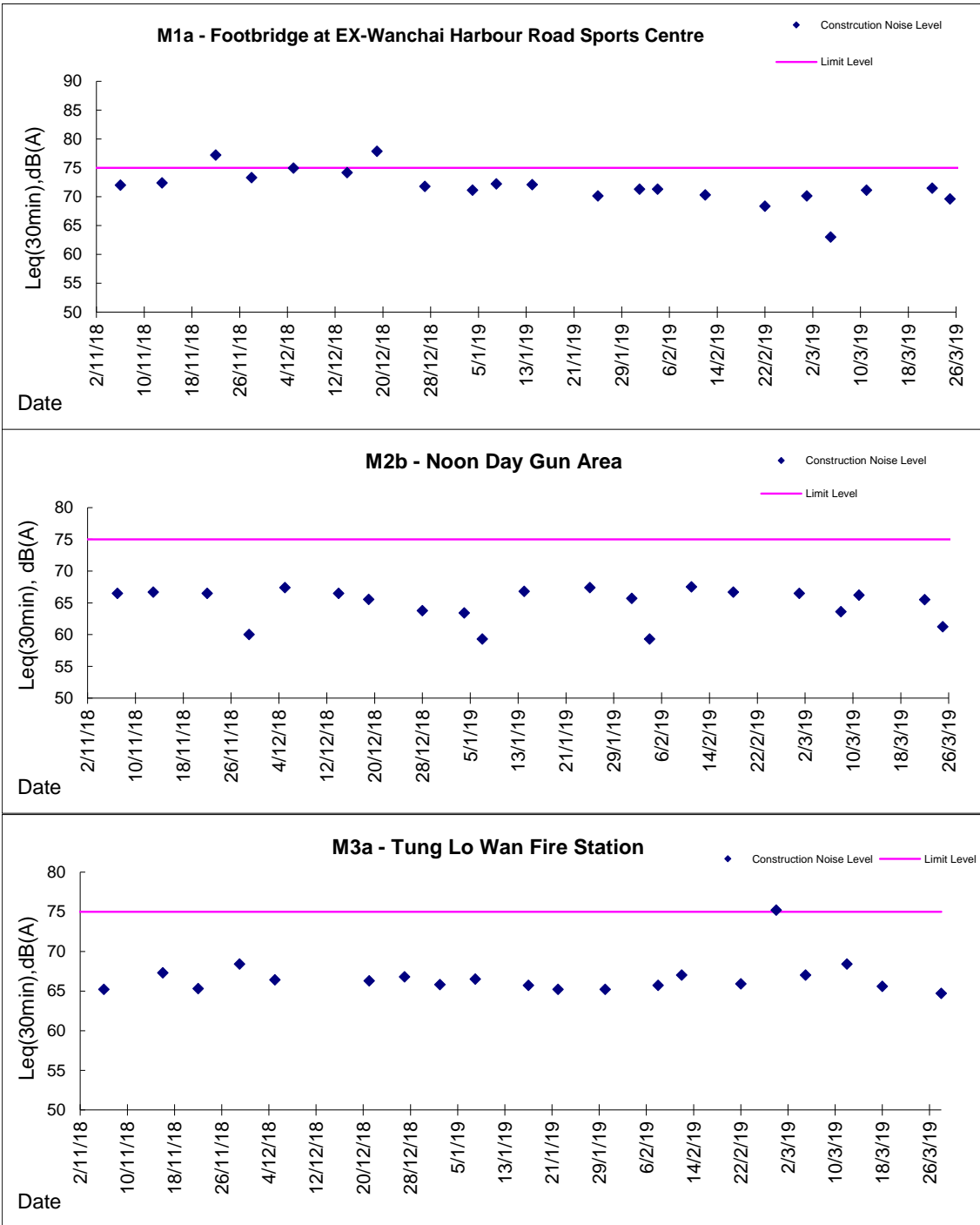
Date	Time	Weather	Measurement Noise Level			Baseline Level	Construction Noise Level	Limit Level
			Leq	L10	L90	Leq	Leq	Leq
Unit: dB(A), (30-min)								
4/3/19	10:15	Fine	68.5	70.0	65.5	69	69	75
11/3/19	14:00	Fine	67.9	70.0	65.0	69	68	75
18/3/19	14:20	Fine	67.8	69.5	63.0	69	68	75
25/3/19	14:55	Cloudy	67.8	70.0	64.5	69	68	75

Location: M8 - City Hall

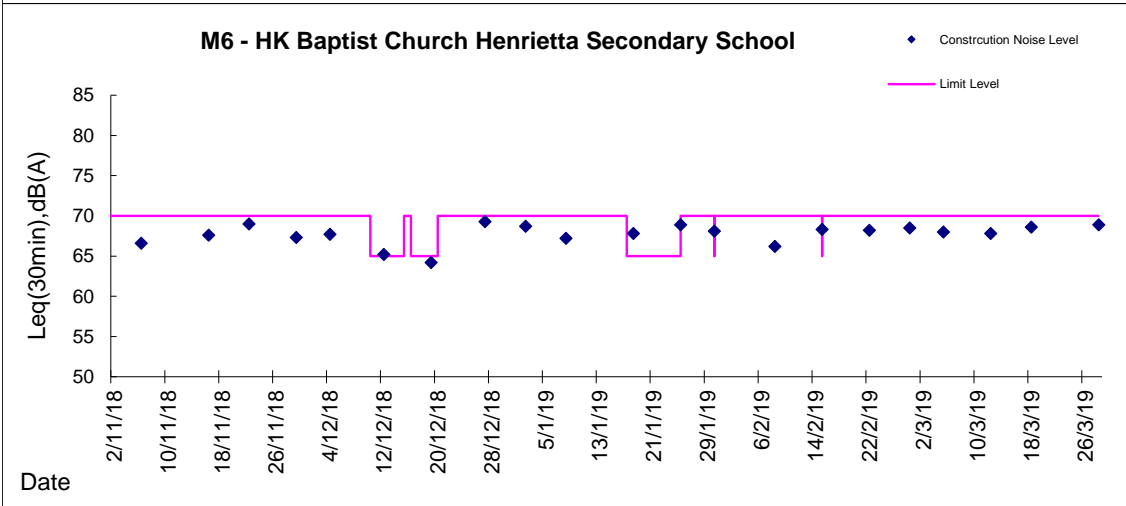
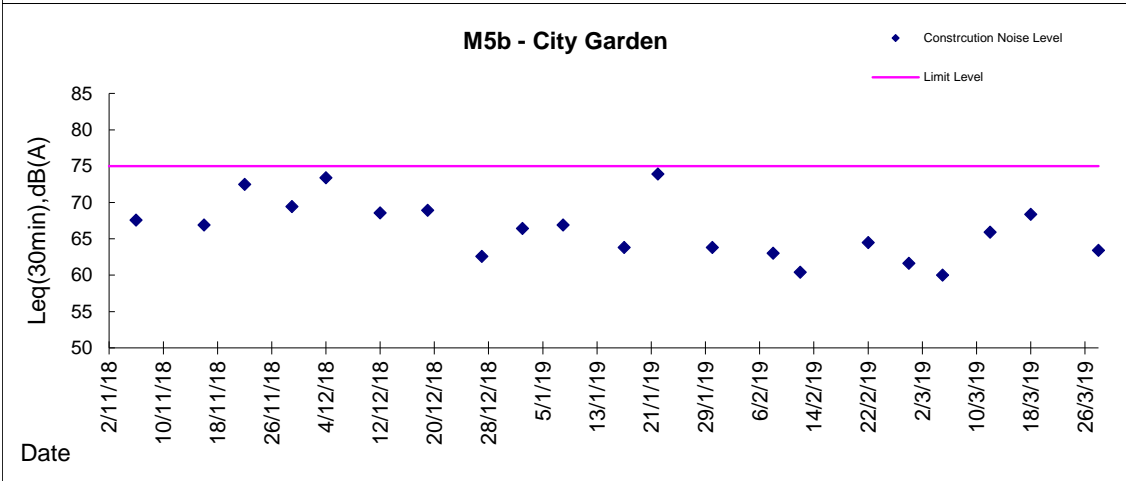
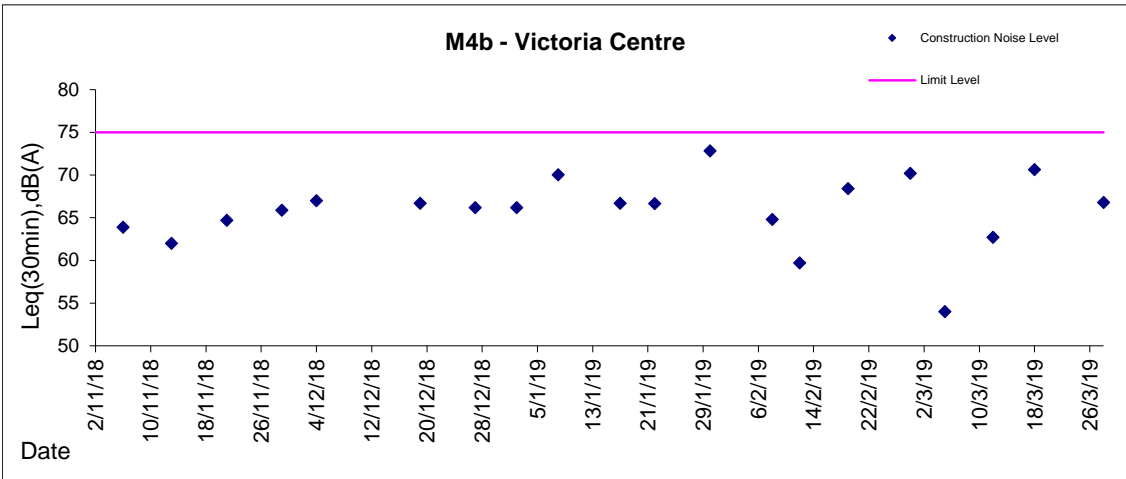
Date	Time	Weather	Measurement Noise Level			Baseline Level	Construction Noise Level	Limit Level
			Leq	L10	L90	Leq	Leq	Leq
Unit: dB(A), (30-min)								
4/3/19	11:28	Fine	68.1	69.5	67.0	64	66	70
11/3/19	14:53	Fine	64.1	65.5	62.0	64	48	70
18/3/19	15:12	Fine	61.9	64.5	57.5	64	62	70
25/3/19	15:45	Cloudy	60.8	62.5	58.0	64	61	70



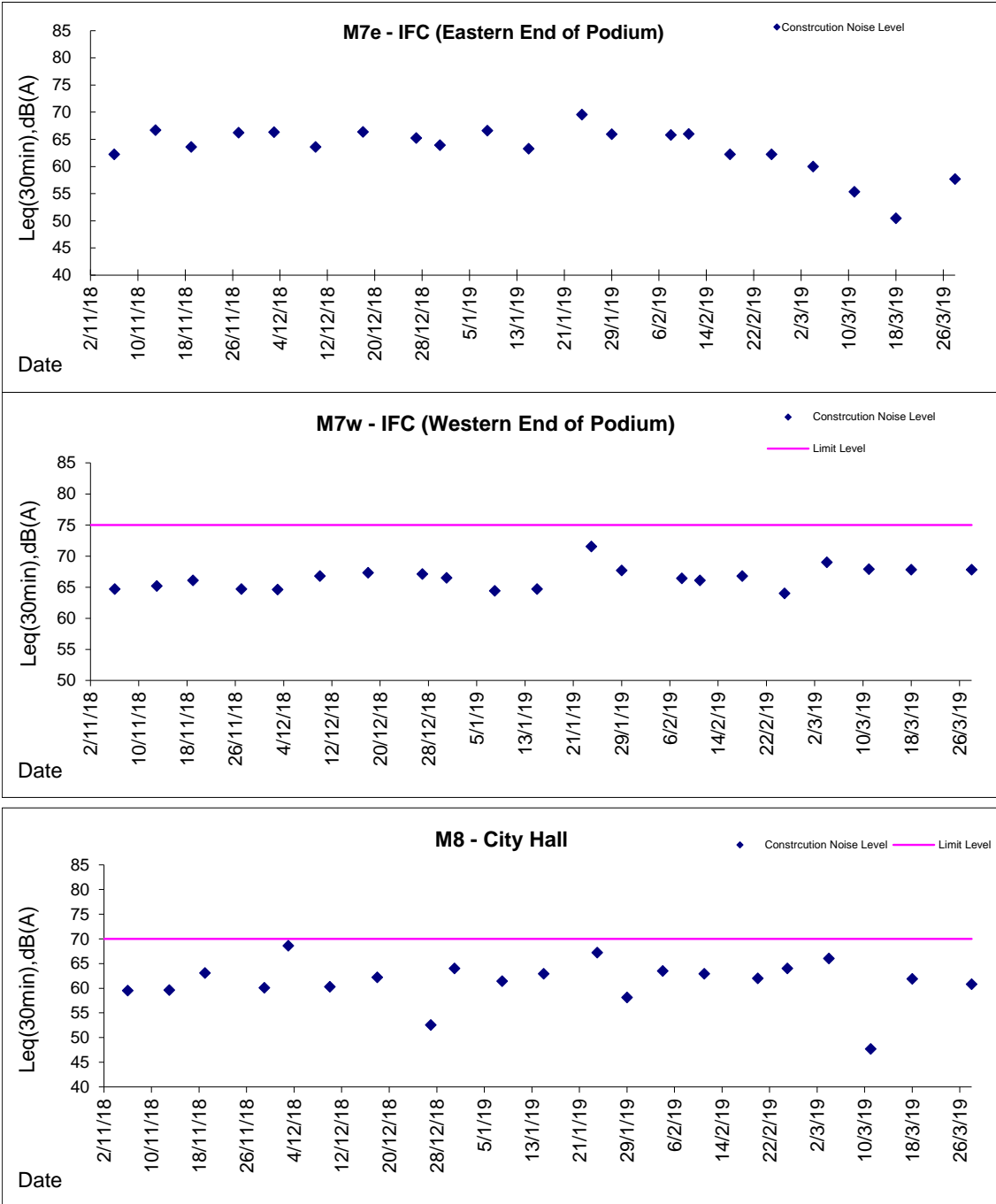
Graphic Presentation of Noise Monitoring Result
Day Time (0700 - 1900hrs on normal weekdays)



Graphic Presentation of Noise Monitoring Result
Day Time (0700 - 1900hrs on normal weekdays)



Graphic Presentation of Noise Monitoring Result
Day Time (0700 - 1900hrs on normal weekdays)



* Remark: M7e - IFC (Eastern End of Podium) is a reference monitoring station